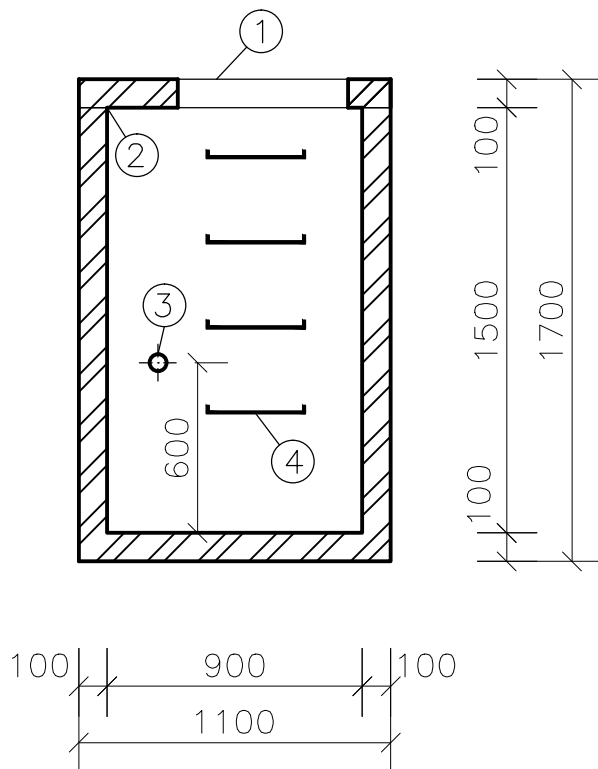


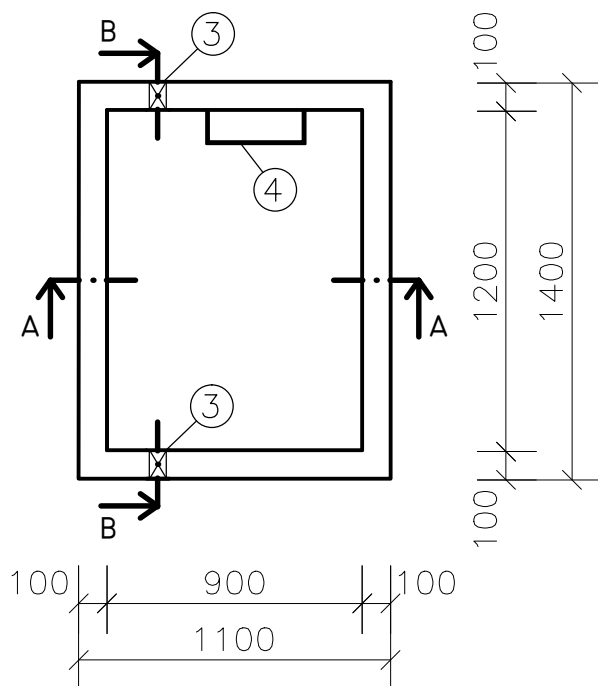
Domová vodomerná šachta MONOLIT 900/1200/1500

Tvar:

REZ A - A



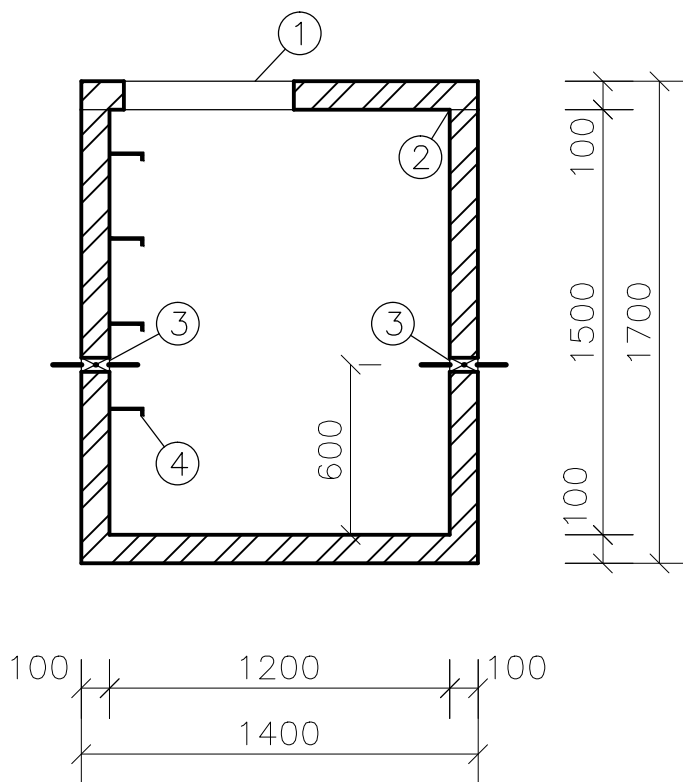
PÔDORYS



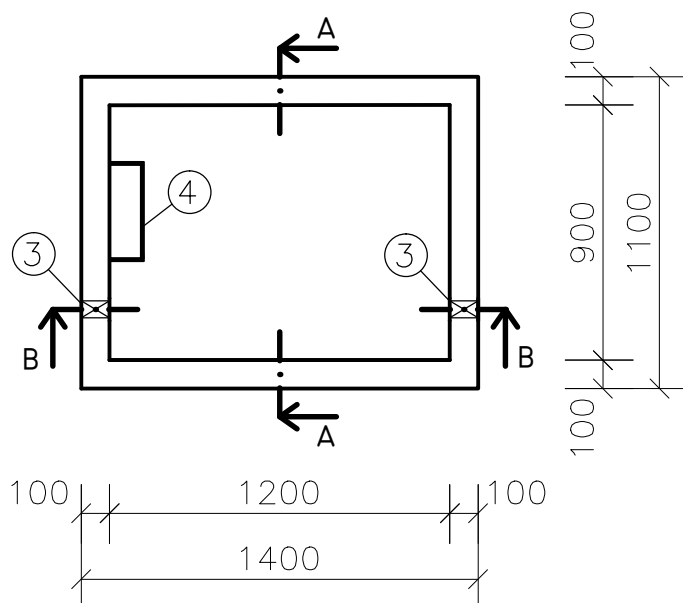
Domová vodomerná šachta MONOLIT 900/1200/1500

Tvar:

REZ B - B



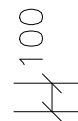
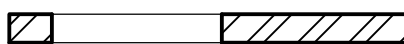
PÔDORYS



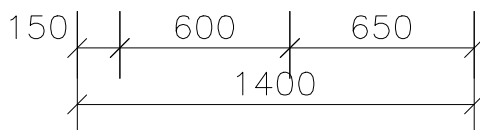
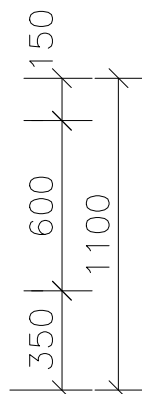
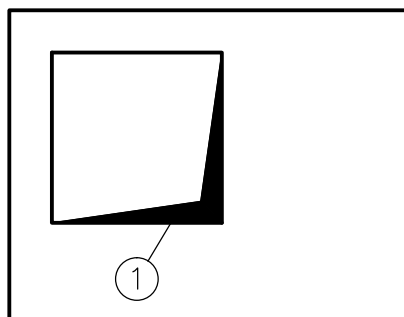
Stropná doska k vodomernej šachte hr. 100 mm

Tvar:

REZ



PÔDORYS



Technické údaje:

Hmotnosť:

| | |
|--------------|----------------|
| Driek | 2175 kg |
| Strop 100 mm | 330 kg |
| Spolu | 2505 kg |

Betón:

C20/25

LEGENDA:

- ① Vstup do vodomernej šachty, otvor 600/600 mm
- ② Tupý spoj vyplnený montážnou penou
- ③ Otvor DN 63 mm na vodovodné potrubie
- ④ Poplastované stúpadlo